

# Vela ECO-RM6E

Independent Working Station Routing Machine

Routing Process solutions: Camera alignment & Depth Control

DSFi Sensor

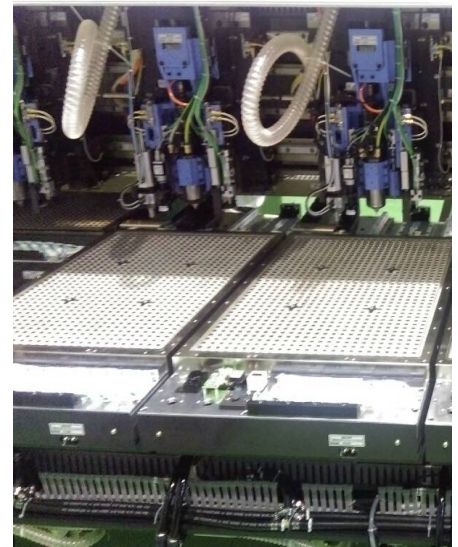
Depth Accuracy  $\pm 15 \mu\text{m}$

❌ DSFi Sensor only for F80P Spindle

Probe gauge

Depth Accuracy  $\pm 30 \mu\text{m}$

- Processing size: 560 \* 772mm(22"\*30")
- Number of table: 6 Station Table
- Spindle Speed : 60 Krpm(Ball Bearing) / 80 Krpm(Air Bearing)
- Processed material: Glass Fiber,Aluminum,Copper,Ceramic,Acrylic



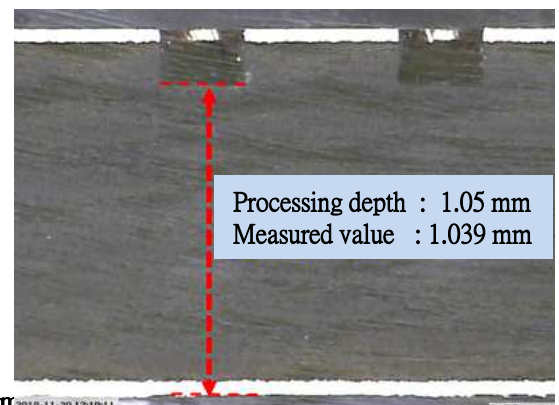
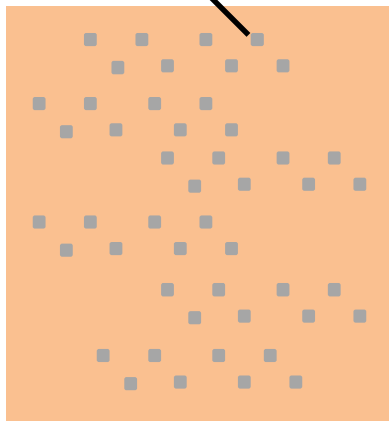
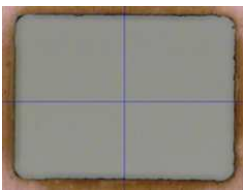
## Cavity Routing / Blind Routing

### Cavity Routing

Cavity Size: 2.1x2.7mm

Accuracy range:

Size and Radius :  $\pm 0.03\text{mm}$



### Blind Routing

Routing bit  $\phi 0.3 \text{ mm}$

Processing depth : 1.05 mm

Accuracy range:  $\pm 0.03\text{mm}$

